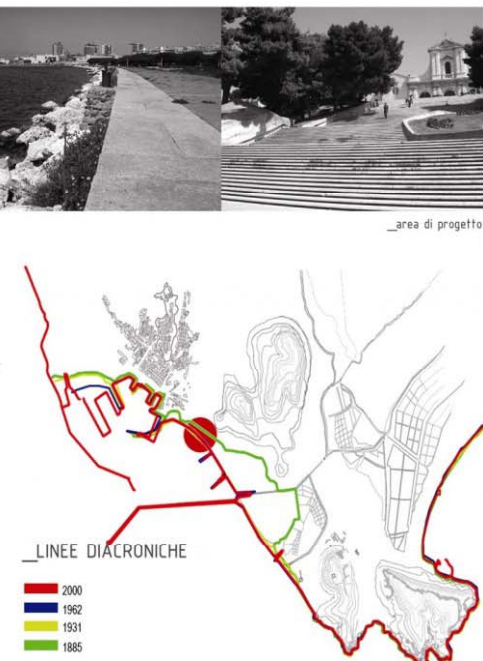
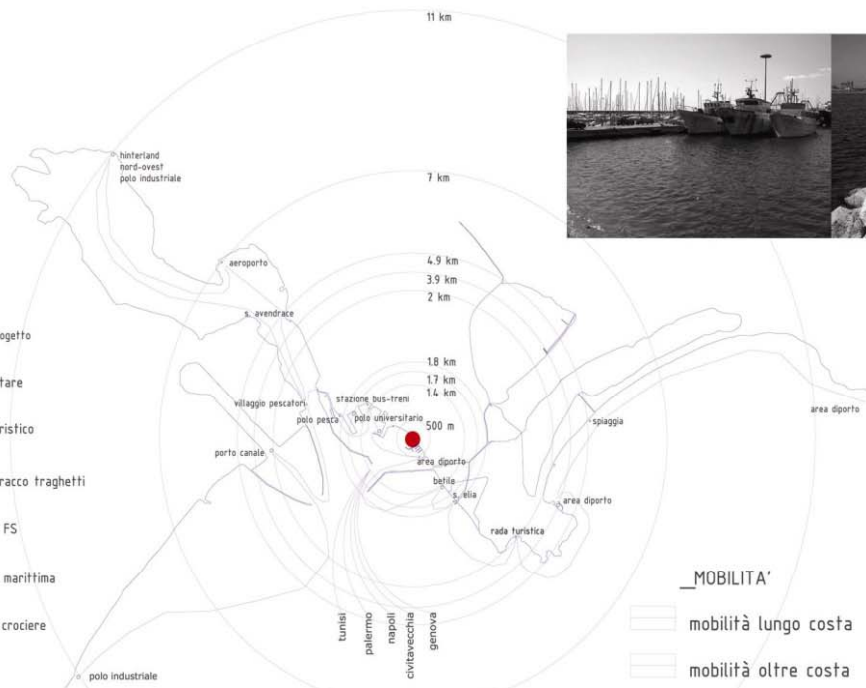
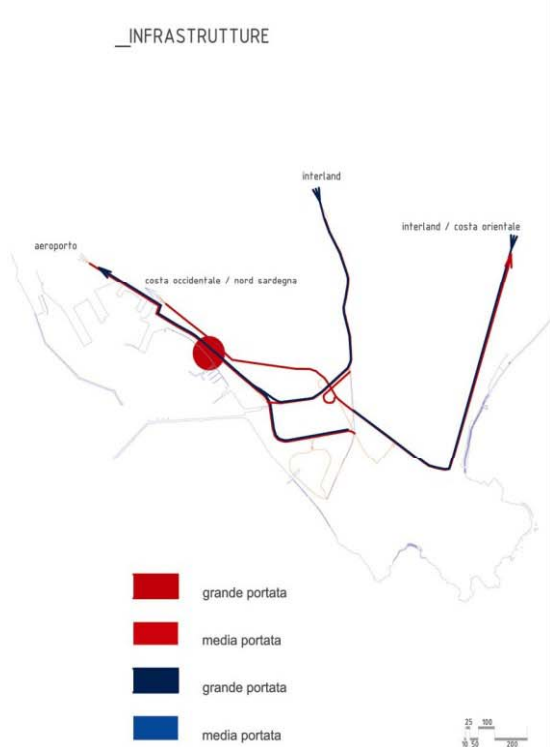
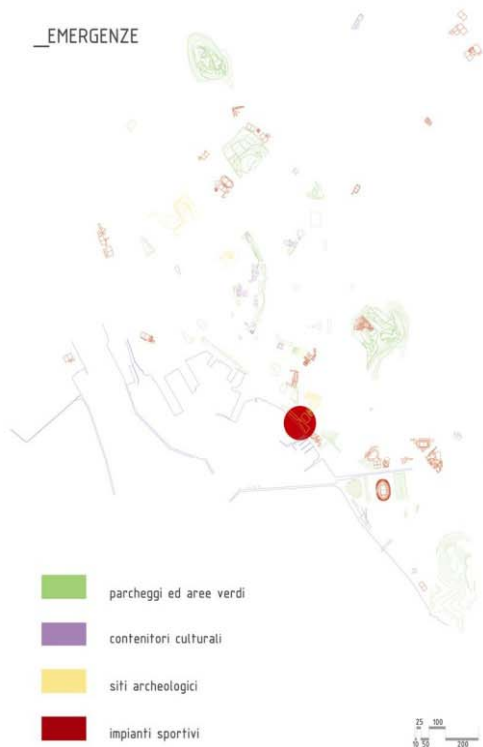
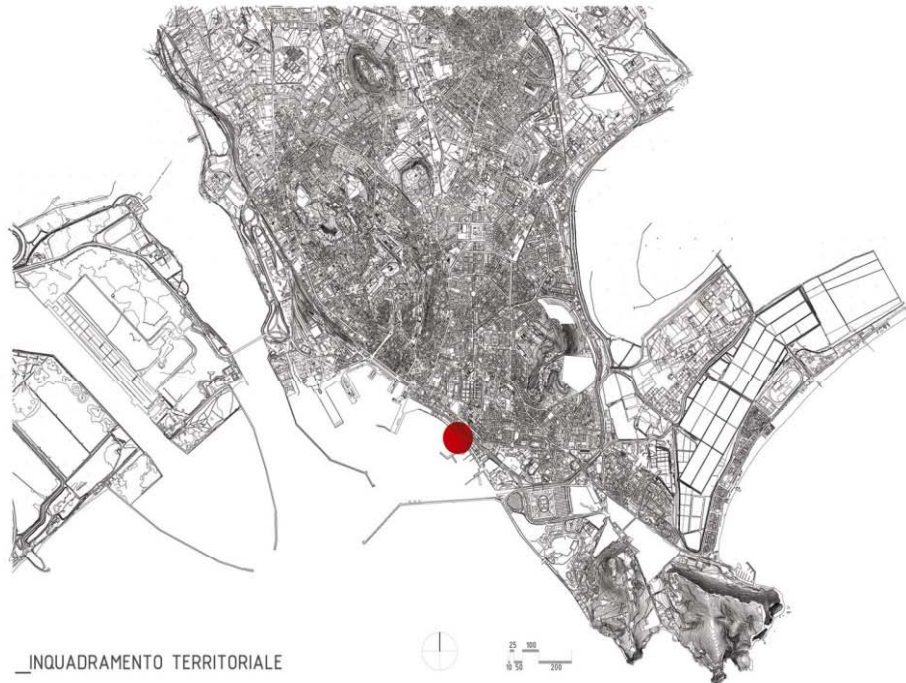


# 01 analisi territoriali



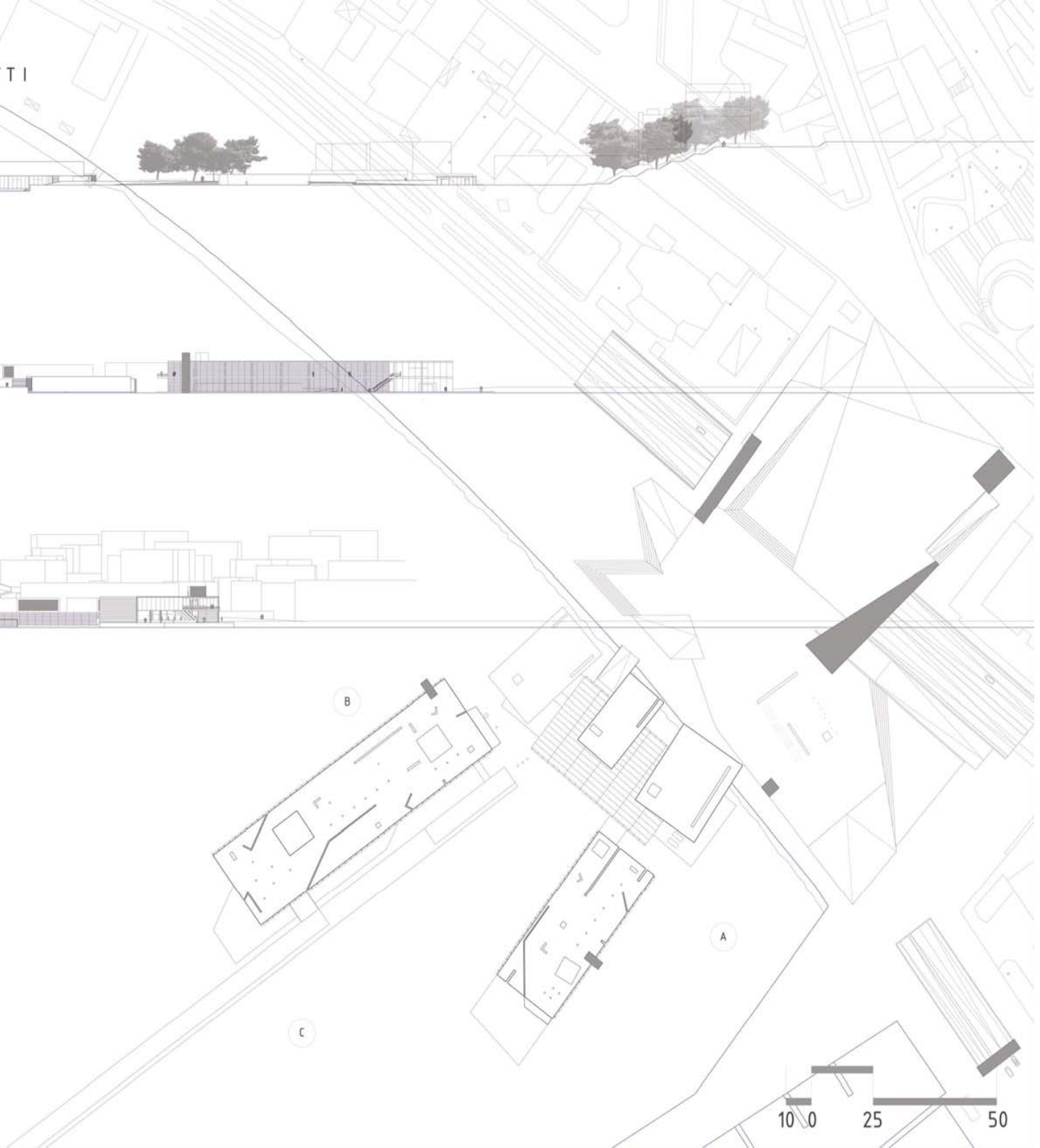
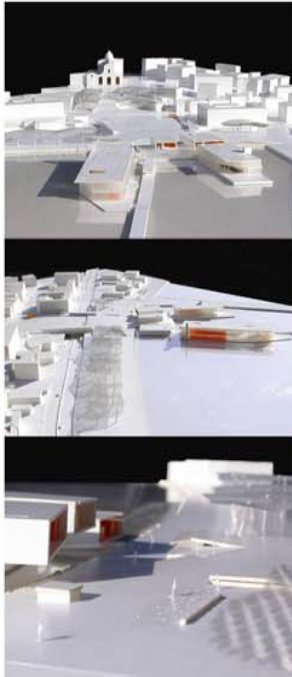
prospetto A



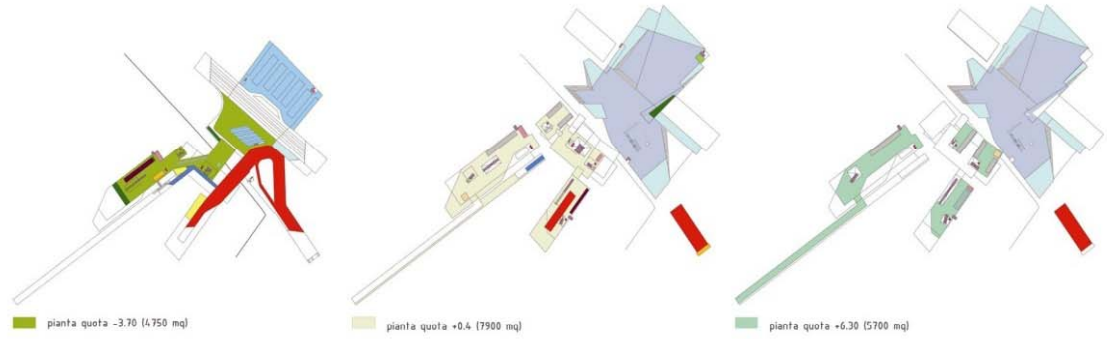
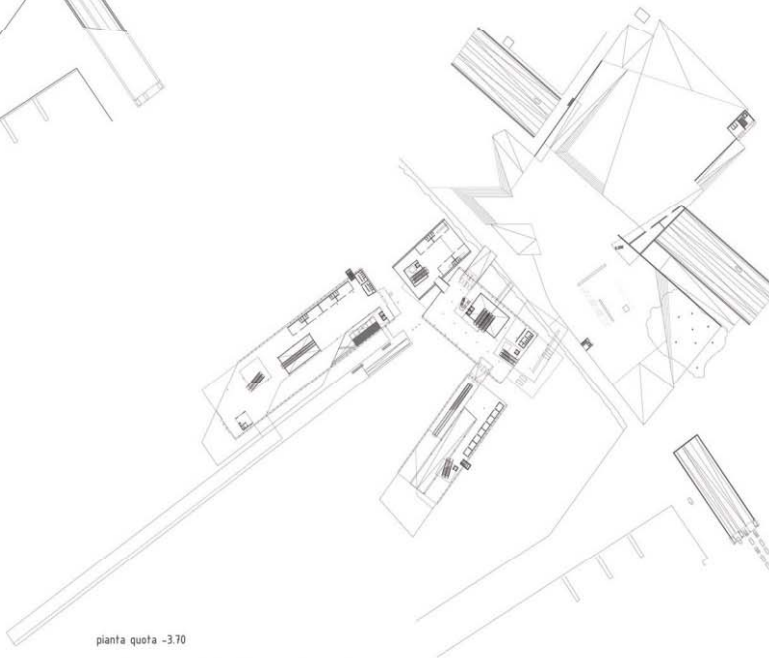
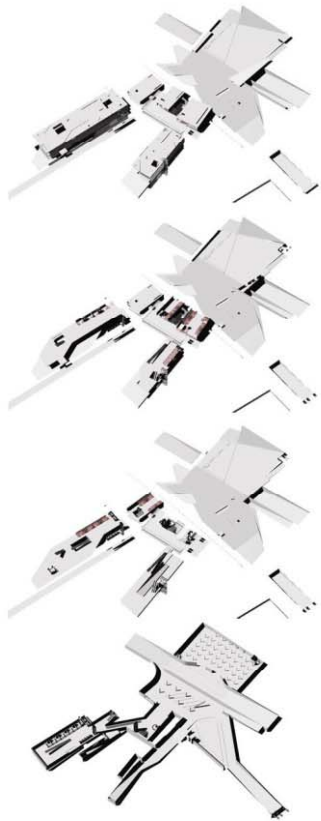
prospetto B



prospetto C

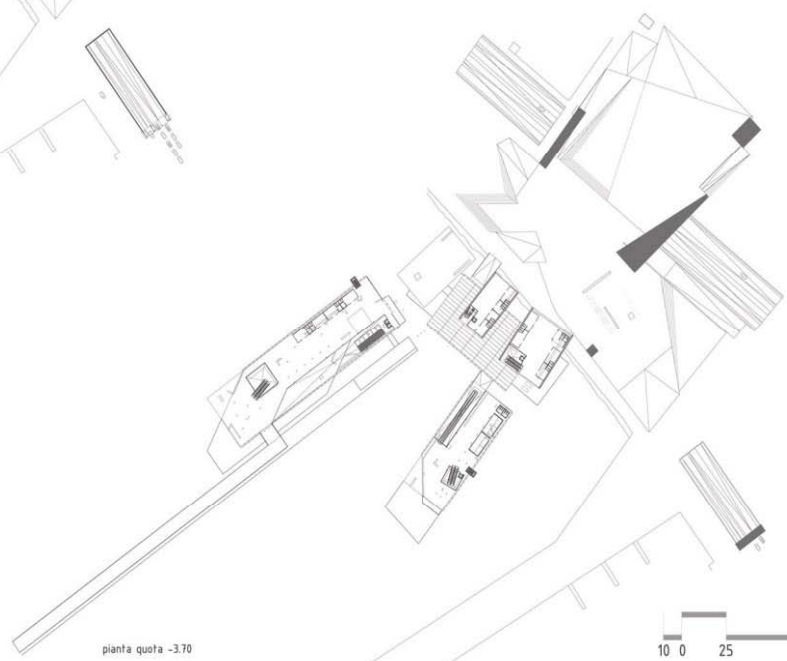


# 03 piante



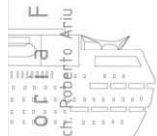
**\_ PROGRAMMA**

spazio pubblico 11000 mq	inbarco traghetti 4670 mq	ascensori 80 mq	risalite verticali 330 mq	depositi 430 mq	percorsi di servizio 300 mq	servizi igienici 195 mq	parcheggi 4920 mq
	box offica 95 mq	check-in 150 mq	uffici 340 mq	negozzi 971 mq	bar-ristoranti 223 mq	rampe 3735 mq	

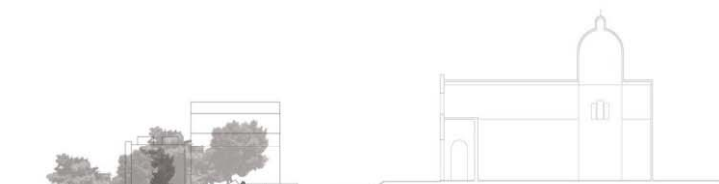


# 04 sezioni

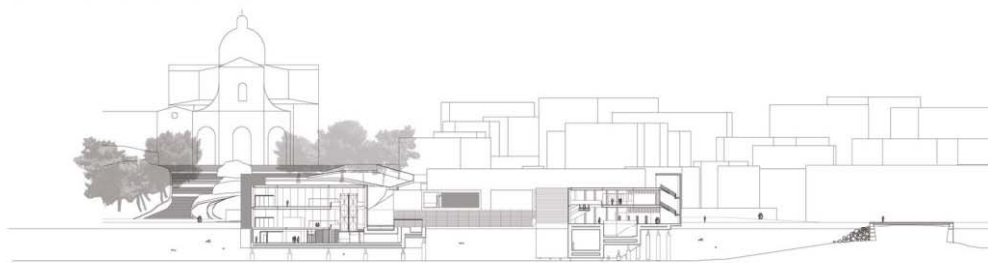
Regione Autonoma Delta Sarda - Premio del paesaggio - categoria F  
Concorso di idee per la promozione di interventi di 'qualità' paesaggistica e sostenibile - ammontato Arch. Roberto Aniu - candidato Arch. Roberto Aniu



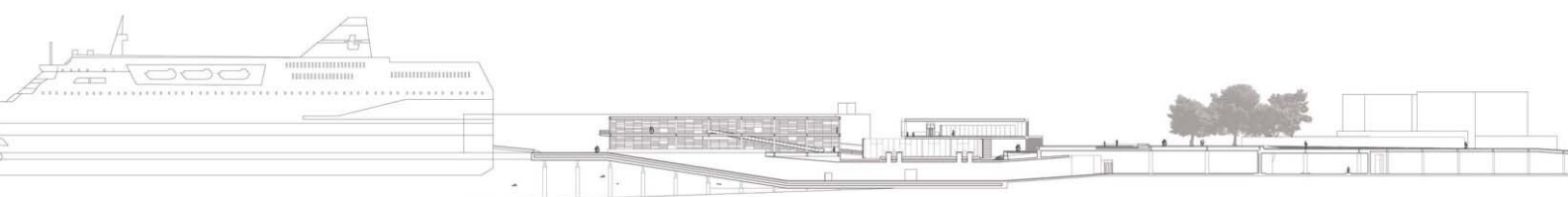
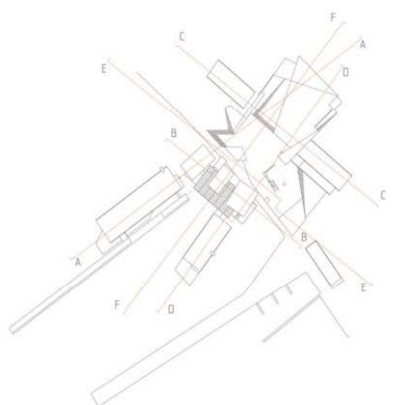
sezione G-G



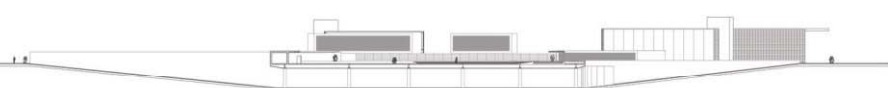
sezione B-B



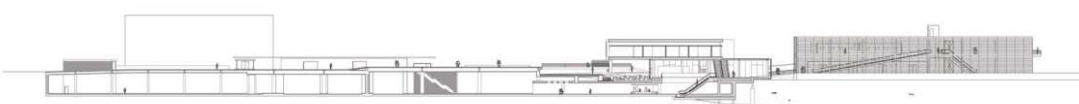
sezione C-C



sezione D-D

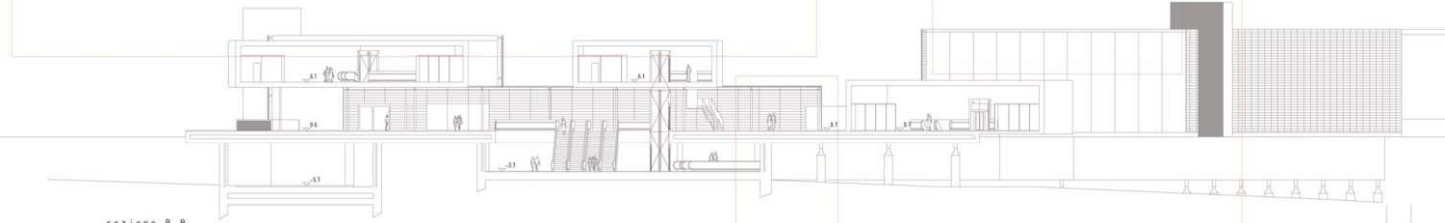
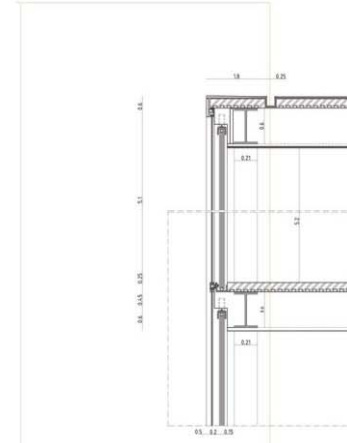
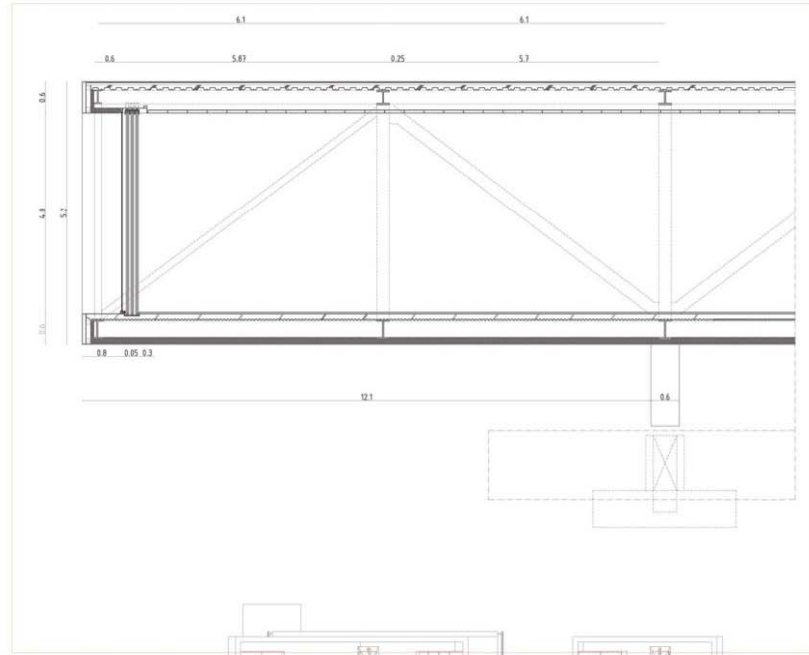


sezione E-E

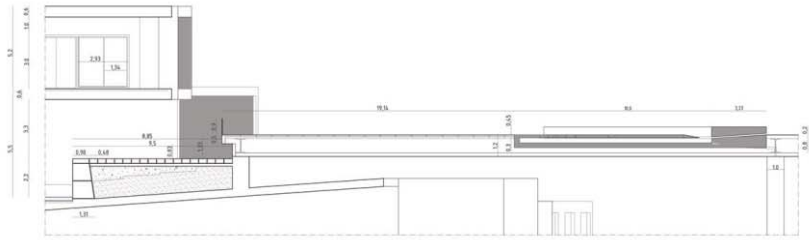
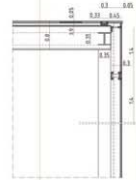
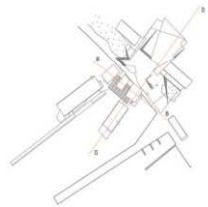


sezione F-F





sezione B-B



sezione D-D

